



2025 Annual Report



Randell M. Bynum **Melanie Sinesi**

In 2025, Girl Scouts of Nassau County remained unwavering in our commitment to the Girl Scout Promise. The Promise is more than a recitation—it’s a way of life and a set of ideals our Girl Scouts strive to uphold every day. Guided by this foundation, we continued to advance our strategic plan, focusing on visible leadership, equitable access and belonging, volunteer support, and sustainable revenue growth. These priorities strengthen our ability to deliver high quality programming to girls across Nassau County.

We remain dedicated to growing our membership and expanding access to the Girl Scout Leadership Experience (GSLE). Innovation continues to be a driving force for us. Building on the success of our Volunteers In Program (VIP), launched in 2024, we purchased a building in Roosevelt, New York. Opening in fall of 2026, our Promise Center will be a youth-centric community hub expanding access for all Girl Scouts and the community of Roosevelt, offering a welcoming space designed to support leadership, learning, and belonging. The Promise Center represents our dedication to meeting girls where they are and ensuring every Girl Scout has a place to grow.

We could not do this work without our incredible volunteers, supporters, and partners. Your commitment makes our work possible. Supporting girls and youth is more important than ever, and we thank you for standing with us.

Randell M. Bynum, LMSW
Chief Executive Officer

Melanie Sinesi
President and
Chief Volunteer Officer

Table of Contents

Message from our CEO and President and Chief Volunteer Office	2
Board of Directors 2025-26	3
Membership	4
Highest Awards	6
Program Participation	7-9
Corporate, University, and Foundation Partners	10-15
Community Engagement Initiatives	16-17
2025 GSNC Community Champion Award Honorees and Legacy and Impact Honorees	18-19
Council Leadership and Service Opportunities	20
Financial Data	21
Corporation/Organization and In-Kind Donors	22
Juliette Gordon Low Society Members	23

Strategic Results

2025-28

VISIBLE LEADER GSNC is recognized as a visible and vocal leader in the region for the empowerment of girls.

EQUITABLE ACCESS AND BELONGING GSNC grows new membership ensuring equitable access to relevant programming, engagement, and resources. All girls feel a sense of belonging in their troop and GSNC.

VOLUNTEER SUPPORT Girls have a positive experience in GSNC and are supported by a growing network of diverse volunteers who support their growth and development.

REVENUE GROWTH GSNC will grow revenue to ensure expanded high-quality programming to an increasingly diverse population of girls.

GSNC Board of Directors 2025-26



OFFICERS

Melanie Sinesi

President and Chief Volunteer Officer
Transco

Allison Bishop White, Esq.

Executive Vice President
Finance

Tonia Bottoms, Esq.

Vice President
Pershing-BNY Mellon

Julie Strachan Haiber, Esq.

Vice President
Harbor Global

Pawel Zagaja

Vice President
DHL US

Leah Watson

Treasurer
A Better You Consulting Services LLC

Anne Marie Spensieri-Fidis

Secretary
Brussels Airlines

Randell M. Bynum

CEO
Girl Scouts of Nassau County, Inc

MEMBERS-AT-LARGE

Gillian Atkinson

Columbia University

Caralinn Becker

Student

Natalie Borneo

Fisk University

Kevin Boston-Hill

Education Consultant

Trisha Brown

Marketing

Madison Bruck

Student

Danielle D'Ambrosio

Strategic Value Partners

Sedgwick Easley

Union Baptist Church

Gabby Gibbs

Student

Adrian Goodwin

New York City Police Department (retired)

Amanda Ieraci

Northwell Health

Hayley Kelch

PSEG Long Island

Mike Mannix

Unparalleled Performance

Patricia Mercer

PM Consulting

Jackie Morrison-Brailsford

NYC Department of Education (retired)

Melanie Pavlidis

Addepar

Noel Raab

Fivestar Advertising

Anthony Sacchetti

Weil Cornell Medicine

Dr. Katrina Rochelle Sims

Hofstra University

Angela Stanley

Incorporated Village of Hempstead

Linda Silva Thompson

Molloy University

Denise Voda

Town of Hempstead

BOARD DEVELOPMENT COMMITTEE

Rebecca Martinez

Chair, Board Development Committee

Elizabeth Flores

Karrien Francis

Clara Giustino

Pascale Leone

Mike Mannix

Nancy Setzler

Rebecca Sheehan, Esq.

Denise Voda



GSNC Membership

Total Membership

15,761

10,982
girls enjoyed the
opportunities of Girl
Scouts with the help of

3,110
adult volunteers

There are
1,669
lifetime members



The Girl Scout Promise
is more than just words our
Girl Scouts say—it is a way of
life and a set of ideals our
Girl Scouts strive
to uphold.

Girl Scout Mission Statement

Girl Scouting builds girls of courage, confidence, and character, who make the world a better place.

Girl Scout Misión

Girl Scouts forma niñas de coraje, confianza y carácter, lugar mejor.

The Girl Scout Promise

On my honor, I will try:
To serve God* and my country,
To help people at all times,
And to live by the Girl Scout Law.

* Members may substitute for the word God in accordance with their own spiritual beliefs.

The Girl Scout Law

I will do my best to be
honest and fair,
friendly and helpful,
considerate and caring,
courageous and strong,
and responsible for what I say and do,
and to respect myself and others,
respect authority,
use resources wisely,
make the world a better place,
and be a sister to every Girl Scout.

La Promesa de Girl Scouts

Por mi honor, yo trataré:
De servir a Dios y a mi patri,
Ayudar a las personas en todo momento,
Y vivir conforme a los valores
de la Ley de Girl Scouts.

* Los miembros pueden sustituir la palabra Dios de acuerdo con sus propias creencias espirituales.

La Ley de Girl Scouts

Yo me esforzaré por
ser honrada y justa,
cordial y servicial,
considerada y compasiva,
valiente y fuerte,
y responsable de lo que digo y hago,
y a respetarme a mí misma y a los demás,
respetar la autoridad,
usar los recursos de manera prudente,
hacer del mundo un lugar mejor,
y ser hermana de cada una
de las Girl Scouts.

GSNC Highest Awards Participation



353 girls
earned their
Bronze Award



213 girls
earned their
Silver Award



48 girls
earned their
Gold Award

2025 Gold Award Girl Scouts



Sophia T. was awarded the Girl Scouts of the USA Gold Award Scholarship valued at \$5,000.

Samantha F. was awarded the Virginia A. Wills Gold Award Scholarship valued at \$1,000.

GSNC Program Participation



1,785 girls participated in 45 GSNC council-led programs, offering exciting and interactive experiences across the four pillars of the **Girl Scout Leadership Experience—Entrepreneurship, STEM, Outdoors, and Life Skills.**

Entrepreneurship programs included hands-on learning connected to the Girl Scout Cookie and Mags&Munchies Programs, helping adults and girls build confidence in marketing, financial literacy, and goal setting.

STEM experiences invited girls to think like engineers and scientists through activities such as designing and racing model cars, experimenting in future-scientist maker labs, and exploring robotics and coding concepts.

Outdoor programming encouraged girls to try new activities, build confidence in nature, and earn badges through experiences like our Fall Family Adventure Day, outdoor artmaker workshop, and Girl Scout Under Gardeners Program.

Life Skills programs fostered creativity and personal growth through activities like our Community Service Leadership Initiative plus interactive health and wellness learning experiences like the Safe Sitter® Certification Workshop and Teddy Bear First Aid Clinics with Catholic Health.

In addition to youth programming, GSNC also offered meaningful learning opportunities for leaders and volunteers, including trainings, troop support sessions, and skill-building workshops designed to help adults deliver high-quality Girl Scout experiences.



The GSNC Traveling Trefoil attended **48** events and engaged **3,050** girls in 2025, hosting a variety of activities at local festivals and fairs, summer library events, community pool and park events, the GSNC Membership Celebration, 2nd Annual Thin Mint Sprint 5K Race and 1-mile Family Fun Walk, Service Unit events, and troop meetings.

GSNC Mags&Munchies Program

2,128 girls participated in the 2025 Girl Scout Mags&Munchies Program

\$68,214 in troop proceeds went back to troops



GSNC Cookie Program

8,732 girls participated in the 2025 Girl Scout Cookie Program

851,016 packages of cookies sold

\$1,015,115 in troop proceeds went back to troops



62,142 packages of Girl Scout Cookies were donated through the Gift of Caring program, which includes Operation Cookie and Hometown Heroes.

In 2025, Girl Scouts of Nassau County celebrated 20 years of Operation Cookie and partnering with DHL Express. DHL has shipped over 1.2 million packages of Girl Scout Cookies to our military worldwide as well as to local “hometown heroes” like police officers, firefighters, and EMS workers.



GSNC Outdoor Experiences



320 girls enjoyed summer camp, filling **473** sessions.

In addition, **965** girls and **700** adults participated in camp council programs and traditional troop camping.



GSNC Sports Programs

554 total participants

HIGHLIGHTS:

Long Island Nets
Basketball Clinic **50** girls

Hofstra University
International
Women and Girls
in Sports Day **158** girls

Third Annual
Women and Girls
in Sports Day at
Adelphi University **102** girls

NY Islanders
Hockey Clinic **45** girls

The Confidence Code:
Unlocking the Power
of Body Positivity
for Mental Health **68** girls



GSNC Corporate, University, and Foundation Partners

DNA Detectives: STEM Adventures

108 Brownies and Juniors experimented like a scientist, investigated like a detective, and uncovered the secrets hidden in cells at the Cold Spring Harbor DNA Learning Center.





Learn to Soar with American Airlines

135 Juniors, Cadettes, Seniors, and Ambassadors learned about careers in aviation, taxied down the runway, and got an up-close look inside a cockpit and airport hangar at LaGuardia Airport.

American 





Girls Who Build, Hosted by United Way of Long Island

7 Girl Scouts from Nassau County were selected to take part in a two-day immersive program designed to explore future career paths in the fields of green energy, engineering, construction, and the skilled trades. Through hands-on learning and real-world experiences, participants engaged with emerging technologies, sustainability practices, and interactive activities. They also connected with mentors and gained valuable insight into innovative industries shaping the future.



Power of Me Wellness Fair Presented by Northwell Health

81 Cadettes, Seniors, and Ambassadors took charge of their mental, emotional, and physical wellness enjoying fun, hands-on activities exploring stress-relief techniques, guided yoga, healthy snack demos, DIY lip scrubs, tips for positive social media use, and creative ways to express themselves.



Teddy Bear Clinics with Catholic Health

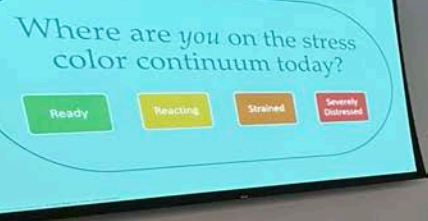
242 Daisies and Brownies learned basic first-aid skills and how to identify and handle emergency situations by training with a teddy bear patient. This highly interactive program, led by doctors and nurses from Catholic Health, was offered four times in 2025—twice at St. Joseph and twice at Mercy Hospital.



Ruby Bridges Walk to School Day

23 girls participated in activities and a walk to commemorate Ruby Bridges Walk to School Day, a student-led movement started by AAA School Safety Patrollers. The annual walk honors the first day of school in 1960 for Ruby Bridges, who was one of the first black children to integrate into an all-white school in Louisiana. Nassau County Police helped keep Girl Scouts safe while they walked by providing patrol cars and officers to block off our parking lot.





**Imagine Your Possibilities:
GSNC and Hofstra University's
10th Annual STEM Conference**



59 Cadettes, Seniors, and Ambassadors explored a variety of STEM concepts through exciting, hands-on workshops led by inspiring female role models.



**GSNC's Second Annual
Mental Health Symposium**

39 stakeholders throughout Nassau County and New York State came together in honor of Mental Health Awareness Month. Clinical practitioners and GSNC staff gathered to learn about Northwell Health's approach to managing and addressing stress distress, and then took action through learning and application to optimize their role as difference-makers for the young people in our schools, community centers, faith-based settings, Girl Scout troops, clinical touchpoints—and in their own families.





International Observe the Moon Night

98 Girl Scouts of all ages celebrated NASA's International Observe the Moon Night with GSNC and the Jones Beach Energy and Nature Center. This annual event unites people around the world in celebration of lunar observation, science, and exploration. Girl Scouts participated in moon-related activities and enjoyed a viewing of the moon in its first quarter.

JONES BEACH
ENERGY & NATURE
CENTER

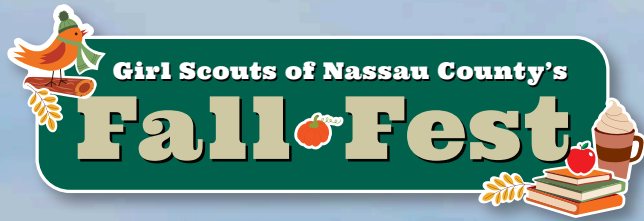




GSNC Community Engagement Initiatives

425 Girl Scouts, family members, friends, and the running community got moving at GSNC's **Second Annual Thin Mint Sprint 5K Race and Family Fun 1-Mile Walk** held at Jones Beach State Park over Girl Scouts Love State Parks weekend.





Girl Scouts of Nassau County's
Fall Fest



550 families came together at Wantagh Park for our 2025 member celebration. Families enjoyed rides, carnival games, music, and plenty of fun while celebrating our renewed members and kicking off the new Girl Scout year.

2025 GSNC Community Champion Award Honorees

We proudly honored four Girl Scout Champions for their outstanding support and dedication to Girl Scouts of Nassau County.



DHL Express

For the last 20 years, DHL Express has supported Girl Scout programming throughout Nassau County and shipped Girl Scout Cookies around the world at no cost to GSNC. The award was accepted by Cathy O'Reilly and Pawel Zagaja on behalf of DHL Express. Cathy's and Pawel's continued support of Operation Cookie enables us to send a "taste of home" to our military serving around the world and

shows Girl Scouts in our area what it means to give back. These awardees and champions in the community were honored at our Legacy Award Brunch on March 12, 2025 at the Heritage Club at Bethpage.

Carol Ransom

Carol's ongoing support of Girl Scouts of Nassau County and girls in her community is truly inspiring. From her years of service on the GSNC Board of Directors to continually showing up and supporting Girl Scout events—Carol is a champion in the community for Girl Scouts of Nassau County. She was presented the Community Champion Award at GSNC's reception and private screening of *Defining Moments: The Life and Leadership of Quiet Revolutionary Frances Hasselbein* on October 5, 2025 at the Bellmore Movies and Showplace in Bellmore.



Dr. Tahira DuPree Chase Superintendent of Schools for the Westbury Union Free School District

The 2025 GSNC Community Summit brought together elected officials, Board of Education, and school administrators to discuss and collaborate on initiatives that positively impact our county. GSNC proudly honored Tahira for her unwavering support of Girl Scouts,

creating transformative experiences that inspire girls to reach their fullest potential on April 1, 2025, at the Merrick Golf Course Clubhouse in Merrick.

Richard Lefkowitz Owner, L&S Graphic Services

L&S Graphic Services was selected as a recipient of the Community Champion Award due to consistently going above and beyond to support Girl Scouts of Nassau County—with quick turnaround, great pricing, and willingness to work within GSNC budgets. Their expertise gives us the best products possible, and their impact is both visible and deeply felt throughout the community. Richard was honored at our 2025 Raise a Glass to GSNC Fall Fundraiser on November 20, 2025 at the Inn at New Hyde Park.



2025 Legacy Honoree

Girl Scouts of Nassau County's Legacy Award recognizes those changemakers in Nassau County who give back to the community and elevate and support the Girl Scout mission through their work, whether it be in their career or volunteer work. The Legacy Award is awarded to an individual (or business) in Nassau County who is a true leader working to pave the way for a positive future for girls and their families in Nassau County.



Stacey I. Sikes | *Long Island Association*

Stacey I. Sikes is Vice President of Government Affairs and Communications for the Long Island Association, where she leads advocacy efforts and initiatives that support economic growth and small businesses across the region. A respected leader in business, government, and the nonprofit sector, she also serves as Chair of the Board of Accelerate Long Island and is a member of the Advisory Board of the New York Community Trust–Long Island. Her leadership has been recognized by organizations including City and State and the Long Island Hispanic Chamber of Commerce. A Long Island native, Stacey was a Girl Scout and now serves as a leader for her daughter's Brownie troop.

2025 Impact Honorees



Girl Scouts of Nassau County's Impact Award recognizes emerging leaders under 40 in Nassau County who are currently giving back and making contributions to the Girl Scout mission and larger Nassau County community. Awardees are the future legacies of Nassau County.



Amanda Ieraci
Northwell Health



Erica Gibson
Adelphi University



Rebecca Martinez
Molloy University

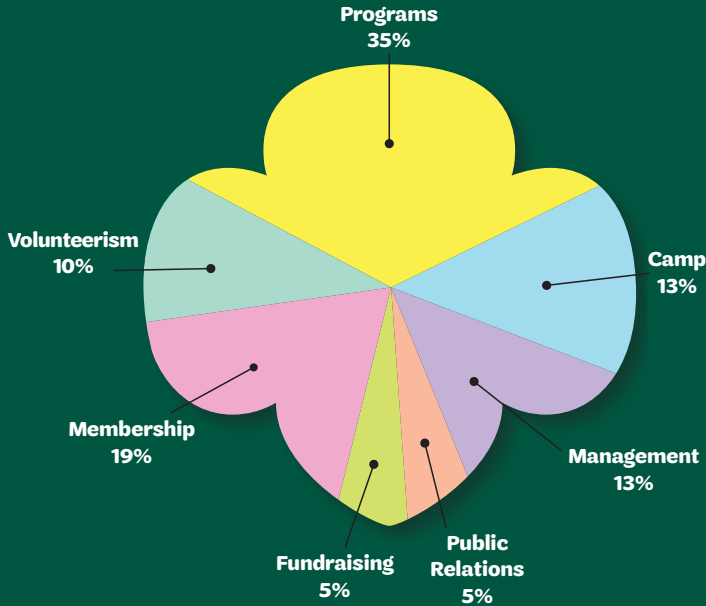
GSNC Council Leadership and Service Opportunities

54,910
service hours earned by
10,928
Girl Scouts
(excluding service hours completed individually or with troop but unreported)



GSNC Financial Data

2025 Expenses by category



Financial Statements of Girl Scouts of Nassau County, Inc. are audited by Nawrocki Smith, LLP

Copies of complete financial statements may be obtained by writing to:
 Girl Scouts of Nassau County, Inc. 110 Ring Road West, Garden City, NY 11530 or
 NYS Department of Law, Charities Bureau Registration Unit, 120 Broadway, New York 10271



Summary of Selected Financial Data

(for the year ending December 31, 2025)

ASSETS

Current Assets	\$ 18,737,627
Fixed Assets, Net	<u>4,925,244</u>
TOTAL ASSETS	<u>\$ 23,662,871</u>

LIABILITIES AND NET ASSETS

Total Current Liabilities	\$ 2,010,892
Net Assets:	
Net Assets Without Donor Restrictions	
General Fund	1,411,178
Board Endowment Fund	321,109
Capital Fund	817,992
New Directions Fund	<u>19,043,751</u>
Net Assets With Donor Restrictions	<u>57,949</u>

TOTAL NET ASSETS	<u>21,651,979</u>
TOTAL LIABILITIES AND NET ASSETS	<u>\$ 23,662,871</u>

PUBLIC SUPPORT AND REVENUES

Public Support	\$ 240,759
Revenues	<u>4,632,602</u>
TOTAL PUBLIC SUPPORT AND REVENUES	<u>\$ 4,873,361</u>

EXPENSES

Program Services Expenses:	
Membership	\$ 1,325,203
Volunteerism	696,928
Programs	2,415,365
Camp	870,214
Supporting Services Expenses:	
Management	936,162
Public Relations	315,913
Fundraising	<u>344,539</u>
TOTAL EXPENSES	<u>\$ 6,904,324</u>

OTHER CHANGES IN NET ASSETS

Investment income	\$ 1,735,045
Unrealized gain on investments held, net	<u>134,189</u>

CHANGE IN NET ASSETS	<u>\$ 1,869,234</u>
-----------------------------	----------------------------

EXCESS OF PUBLIC SUPPORT AND REVENUES OVER EXPENSES	<u>\$ (161,729)</u>
--	----------------------------

**A special thank you
to each of you for
your support.**

**You make sure the
Girl Scout Leadership
Experience is available
to every girl in
Nassau County.**

You make a positive
impact in the lives of girls,
and you break down barriers
to participation by funding
membership, program fees,
camp, STEM activities, and
so much more.

(If we omitted or misspelled
your name, please accept our
apologies and notify us at
funddevelopment@gsnc.org
so we can make the corrections.)



**2025 Corporation/
Organization Donors**

\$10,000 and above

Estate of Diane Grace Marks
National Grid
PSEG Long Island LLC

\$5,000–\$9,999

American Citizens for Soldiers
in Service (Dee's Nursery)
Frank J. Antun Foundation
Hofstra University
Long Island Association, Inc.
McKeen Fund c/o
Bessemer Trust Company
Nassau County Bar Association
WE CARE Fund

\$2,000–\$4,999

Anita B. and Howard S. Richmond
Foundation, Inc.
BBS Architects,
Landscape Architects & Engineers
EPIC Insurance Brokers
& Consultants
Morgan Stanley Wealth
Management
Solarus Technologies
United Way of Long Island

\$500–\$1,999

Adelphi University
Anthem BlueCross BlueShield
Chubb Insurance–
New York Region
Community Chest of Port
Washington
Fidelity Charitable Donor-
Advised Fund
Great Neck Community Fund
Nawrocki Smith LLP, CPAs
PSEG Foundation
PSEG Power of Giving Campaign
Stop & Shop Community
Bag Program
ZE Creative Communications

\$200–\$499

CM Group LLC DBA Moe's
Southwest Grill
Doll Study Club of Long Island
Fidelity Charitable Donor-
Advised Fund
Graphic Image/GiGi New York
Jewish Communal Fund
L&S Graphics
Molloy University
Northwell Health
Richner Communications, Inc.
Sacred Heart Academy Hempstead
Valley Van

2025 In-Kind Donors

317 Main Street
American Airlines
Anthony Scotto Restaurants
Joanne Antun
Astoria Productions
Dianne Auci
Theresa Aulman-Viola
Bee's Arts and Crafts Studio
Laura Bissett-Carr
Randell M. Bynum
Catholic Health of Long Island
The Cheesecake Factory
Chipotle Mexican Grill
Cassie Colgan
Connoisseur Media Long Island
Dashing Diva
DHL Express
Dolce Bella Oceanside
Dover Publications
Andrea Elder-Howell
Empire Adventure Park
Fred Astaire Dance Studios
Garden City
Karla George-Smith
Gigi's New York/Graphic Image
Girl Scouts of Nassau County
Gorjana Jewelry
GourmetGiftBaskets.com
Hicks Nurseries
Hofstra University
Amanda Ieraci
Debra Ieraci
IMA Financial Group
The Inn at Fox Hollow
Jones Beach Brewing Company
Kendra Scott Jewelers
Cathy Kerins
Anna Lenz
Lifetime Brands
Long Island Ducks
Long Island Nets
Patricia Mercer
Kellianne Moran
Elizabeth Murphy
New York Islanders
New York Mets
New York Racing Association
Northwell Health
NYU Langone Health
Marilou Owens
Melanie Pavlidis
Richner Communications/
LI Herald
Donna Rivera-Downey
The Roslyn,
Tapestry Collection by Hilton
Melanie Sinesi
South Shore Craft Brewery
Spuntino Wine Bar & Italian Tapas
Starbucks Garden City
Tiger Schulmann's Martial Arts
of Garden City
Tilles Center
TopGolf Holtsville
Denise Voda
Allison Bishop White

Juliette Gordon Low Society Members

The Juliette Gordon Low Society recognizes individuals who plan to include Girl Scouts of Nassau County in their estate plans. This process is one way to ensure that resources are available for Girl Scouts in the future. Each year, the council hosts a formal induction ceremony for new members.

Please let us know if you plan to or have already included GSNC in your estate plans. We are grateful to all our Juliette Gordon Low Society members.

Joanne Antun
Eileen Baker
Dianne Belk
Dierdre Blackmore
Natalie Borneo
Randell M. Bynum
Lawrence Calder
Susan Cannatella
Susan Caruso
Donna Ceravolo
Iris Dorfman
Paula Ducker
Luci Duckson-Bramble
Anthony J. Edelman
Theresa Edelman
Judi Franzen
Cynthia Gordon
Maryse Haig
Kelly Hill
Debra Ieraci
Wanda Jackson
Diane McFarlane
Carlie Mendoza
Cathy O'Reilly
Carol Ransom
Donna Rivera-Downey
Judy Stenson

Mary VandenHeuvel
Diane White

2025 Individual Donors

GOLD CIRCLE

\$5,000–\$9,000

Randell M. Bynum
Spencer Davidson

SILVER CIRCLE

\$2,000–\$4,999

Laura Bissett Carr and
Wayne Carr
Rudolf Fischer
Anne Marie Spensieri-Fidis

BRONZE CIRCLE

\$500–\$1,999

Joanne Antun
Gillian Atkinson
Dianne Auci
Theresa Aulman-Viola
Lydia Becker and Caralinn Becker
Allison Bishop White, Esq.
Kevin Boston-Hill
Tonia Bottoms, Esq.
Trisha Brown
Ann Butera
Donna Ceravolo and Wells Jones
Cassie and Matthew Colgan
Danielle D'Ambrosio
Brenda Donnelly and
Madison Bruck
Andrea Elder-Howell, Esq.
Elizabeth Flores-Amaya
Karrien Francis
Karla George-Smith
Adrian Goodwin, Ph.D.
Esther Fortunoff Greene
Julie Strachan Haiber, Esq.
Janet Hundt
Amanda Ieraci
Debra Ieraci

Wanda Jackson
Hayley Kelch, Esq.
Sandra Mahoney
Michael Mannix
Rebecca Martinez, Ph.D.
Patricia Mercer
Lasherelle Morgan, Esq.
Jackie Morrison-Brailsford
Melanie Pavlidis
Noel Raab
Kathleen Rau
Donna Rivera-Downey
Anthony Sacchetti
Katrina Sims, Ph.D.
Melanie Sinesi
Angela Stanley
Linda Silva Thompson, Ph.D.
Jamie Tortorella-Birnstill
Denise Voda
Leah Watson
Pawel Zagaja

GREEN CIRCLE

\$200–\$499

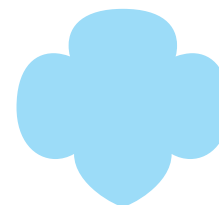
Maureen Ahearn
Olawumi Babalola
James Becker
Jamie Bleyer
Natalie Borneo
Raven Brewington
Lisa Heintz Burke
Scharlene Bynum
Austin Cannon Jr.
David and Diane Cohen
Theresa Danks
Luci Duckson-Bramble
Sedgwick Easley
Stephanie Fidis
Mark Florio
Mary Gebauer
Denise and Gabriella Gibbs

Christopher Goodwin
Winston Henderson
Diane McFarlane, Esq.
Elizabeth Murphy
Francine O'Connor
Desiree O'Neil
Dale Oswald
Marilou Owens
Jean Peden-Christodoulou, Ph.D.
Andrea Price
Carol Ransom
Kerri Scanlon
Deborah Schiff
Nancy Setzler
Allison Sheridan
Carolyn Silvers
Jennifer Simonetti
Rein Singfield
Treadwell Singfield
Marilyn Stolz
Anne Stubing
Joyce Wagner
Kevin Walsh
Diane White
John Zhao

2025 Family Partnership

\$100+ Donors

Chen Family
Luisi Family
Mack-Edouard Family



girl scouts 
of nassau county

Donate today!
Scan the QR code or visit
bit.ly/gsnc-donate-now.



Girl Scouts of Nassau County, Inc.

110 Ring Road West, Garden City, NY 11530

Tel 516.741.2550 | Fax 516.741.2207 | gsnc.org

Girl Scouts of Nassau County, Inc., an Equal Opportunity, Affirmative Action Agency,
is a member of Long Island's United Way, Inc. and The Community Chest of Port Washington.